

\$485,000 - 7782 Eifert Crescent, Edmonton

MLS® #E4424233

\$485,000

3 Bedroom, 2.50 Bathroom, 1,584 sqft
Single Family on 0.00 Acres

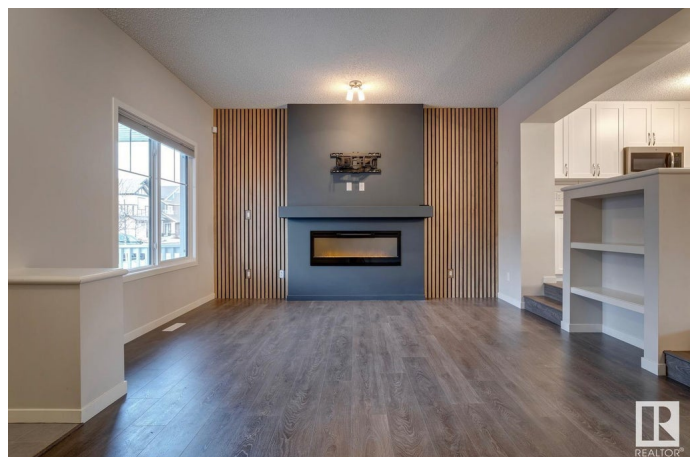
Edgemont (Edmonton), Edmonton, AB

Welcome to your new, home sweet home in the heart of the peaceful suburban neighbourhood of Edgemont! This inviting residence offers a perfect blend of modern comfort and classic charm, making it the ideal place to put down roots and create lasting memories. Inside, this Brookfield built 2 storey home, you'll find a spacious and flexible floor plan. The living room is ideal for family gatherings while the raised dining area with large windows is perfect to keep an eye while the kids play in your southern facing, fully landscaped backyard. The heart of the home is the kitchen, boasting modern appliances, ample counter space, upgraded cabinetry and plenty of storage. Upstairs, 3 generously appointed bedrooms await. The primary bedroom boasts a luxurious 5 piece en-suite as well as walk in closet. Enjoy the tranquility of suburban living while still being conveniently close to excellent schools, shopping, parks, trails and ponds for walking, running or biking and all the amenities you desire.

Built in 2018

Essential Information

MLS® #	E4424233
Price	\$485,000
Bedrooms	3



Bathrooms	2.50
Full Baths	2
Half Baths	1
Square Footage	1,584
Acres	0.00
Year Built	2018
Type	Single Family
Sub-Type	Detached Single Family
Style	2 Storey
Status	Active

Community Information

Address	7782 Eifert Crescent
Area	Edmonton
Subdivision	Edgemont (Edmonton)
City	Edmonton
County	ALBERTA
Province	AB
Postal Code	T6M 0W1

Amenities

Amenities	Closet Organizers, Front Porch
Parking	Double Garage Detached

Interior

Interior Features	ensuite bathroom
Appliances	Dishwasher-Built-In, Dryer, Garage Control, Garage Opener, Microwave Hood Fan, Refrigerator, Stove-Electric, Washer, Window Coverings, TV Wall Mount
Heating	Forced Air-1, Natural Gas
Fireplace	Yes
Fireplaces	Insert
Stories	2
Has Basement	Yes
Basement	Full, Unfinished

Exterior

Exterior	Wood, Stone, Vinyl
Exterior Features	Fenced, Landscaped, Low Maintenance Landscape, Playground

Nearby, Public Transportation, Schools, Shopping Nearby, Ski Hill
Nearby

Roof Asphalt Shingles
Construction Wood, Stone, Vinyl
Foundation Concrete Perimeter

School Information

Elementary Winterburn School (K-6)
Middle Michael Phair (7-9)
High Lillian Osborne (10-12)

Additional Information

Date Listed March 6th, 2025
Days on Market 8
Zoning Zone 57

DATA IS DEEMED RELIABLE BUT IS NOT GUARANTEED ACCURATE BY THE REALTORS® ASSOCIATION OF EDMONTON. COPYRIGHT 2025 BY THE REALTORS® ASSOCIATION OF EDMONTON. ALL RIGHTS RESERVED. Trademarks are owned or controlled by the Canadian Real Estate Association (CREA) and identify real estate professionals who are members of CREA (REALTOR®, REALTORS®) and/or the quality of services they provide (MLS®, Multiple Listing Service®)

Listing information last updated on March 13th, 2025 at 11:47pm MDT