

\$489,000 - 1807 Tomlinson Crescent, Edmonton

MLS® #E4423910

\$489,000

4 Bedroom, 2.50 Bathroom, 1,329 sqft

Single Family on 0.00 Acres

Terwillegar Towne, Edmonton, AB

**FORMER SHOW HOME ~ METICULOUSLY
MAINTAINED ~ IMPRSSIVE UPGRADES**

Sitting on a quiet tree lined street sits a former showhome that comes with a great floor plan, newly built front and back decks, newer furnace and hot water tank, and a gorgeous back yard that's perfect for family and entertainment. Notice the gorgeous deck when you walk up. It's been completely redone and shows beautifully and reflects what you're going to see once inside the home. Show home upgrades include two additional dormers that make the living room and dining room feel so much bigger, plus they come with additional windows that flood the home with natural light. The kitchen is bright and inviting, offering tons of counter space and storage. The basement is fully finished with a fourth bedroom and full bath...perfect for that soon to be teenager! But step on the back deck and soak up the south facing sun, the back yard is truly a family paradise, and this home is truly a perfect family home. Did I mention the large garage?

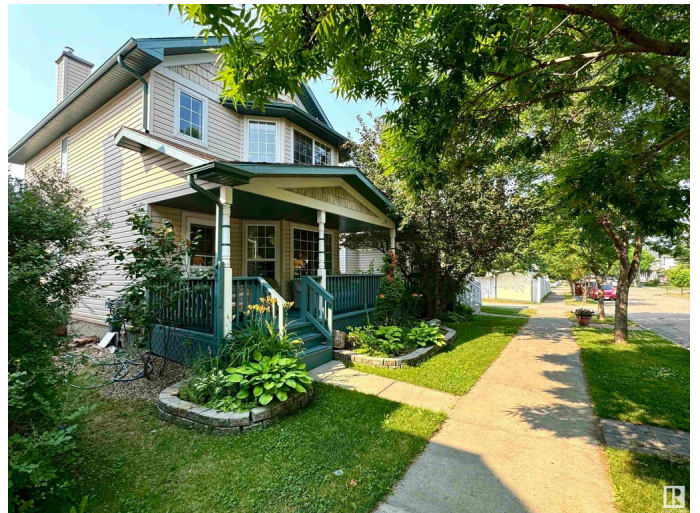
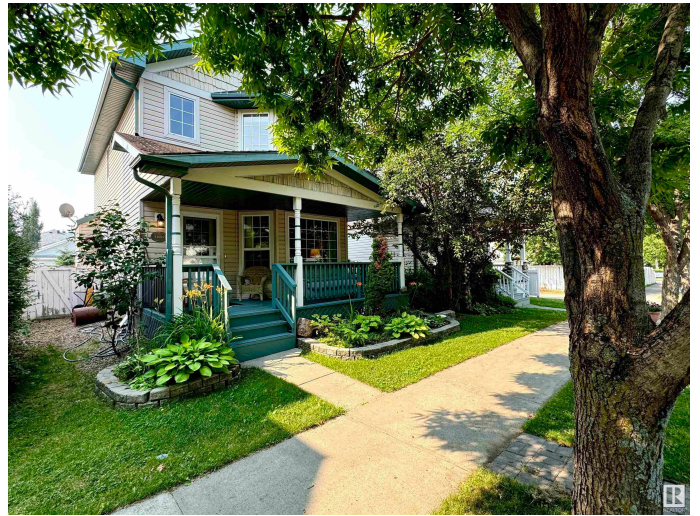
Built in 1998

Essential Information

MLS® # E4423910

Price \$489,000

Bedrooms 4



Bathrooms	2.50
Full Baths	2
Half Baths	1
Square Footage	1,329
Acres	0.00
Year Built	1998
Type	Single Family
Sub-Type	Detached Single Family
Style	2 Storey
Status	Active

Community Information

Address	1807 Tomlinson Crescent
Area	Edmonton
Subdivision	Terwillegar Towne
City	Edmonton
County	ALBERTA
Province	AB
Postal Code	T6R 2T4

Amenities

Amenities	Deck, Front Porch
Parking Spaces	2
Parking	Double Garage Detached

Interior

Appliances	Dishwasher-Built-In, Dryer, Oven-Microwave, Refrigerator, Stove-Electric, Washer, Window Coverings
Heating	Forced Air-1, Natural Gas
Stories	3
Has Basement	Yes
Basement	Full, Finished

Exterior

Exterior	Wood, Vinyl
Exterior Features	Fenced, Landscaped, Playground Nearby, Public Transportation, Schools, Shopping Nearby
Roof	Asphalt Shingles
Construction	Wood, Vinyl

Foundation Concrete Perimeter

Additional Information

Date Listed March 4th, 2025
Days on Market 10
Zoning Zone 14
HOA Fees 138
HOA Fees Freq. Annually

DATA IS DEEMED RELIABLE BUT IS NOT GUARANTEED ACCURATE BY THE REALTORS® ASSOCIATION OF EDMONTON. COPYRIGHT 2025 BY THE REALTORS® ASSOCIATION OF EDMONTON. ALL RIGHTS RESERVED.Trademarks are owned or controlled by the Canadian Real Estate Association (CREA) and identify real estate professionals who are members of CREA (REALTOR®, REALTORS®) and/or the quality of services they provide (MLS®, Multiple Listing Service®)
Listing information last updated on March 14th, 2025 at 8:47am MDT